

Project: Cryogenic Distribution System
2K Valve Box and Multi-channel Transfer Line (USA)
Year: 2014 / 2015



2K Valve Box

- geometrical constraints
- high number of required fittings (safety valves, flow meters, hand and pneumatic valves)
- in-line design with integrated vacuum barriers



Multi-channel Transfer Line

- various cryogenic media (LHe and LIN)
- different temperatures (2K, 5K, 40K and 80K)
- different pressures and states
- cooled-down or warmed-up independently at different rates and sequences
- minimum contact among supply and return lines
- lowest level of heat input

Project: XFEL Cryomodule Test Stand with 2K Valve Box (Germany)

Year: 2006



XFEL Cryomodule test Stand with 2K valve box

XFEL Cryomodule Test Stand with 2K Valve Box

- 4.5K and 80K shield
- feed cap
- end cap
- control valve box
- transfer line
- pipe diameter DN10 - DN50

Multi-channel Transfer Line

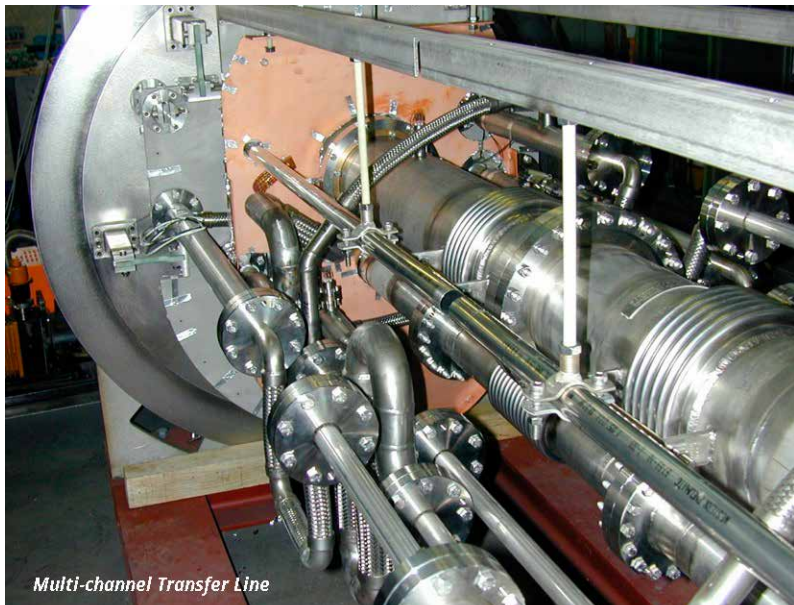
- various cryogenic media (LHe and LIN)
- different temperatures (2K, 5K, 40K and 80K)
- different pressures and states
- cooled-down or warmed-up independently at different rates and sequences
- minimum contact among supply and return lines
- lowest level of heat input
- excellent shielding of the 2K and 4K lines



2K Valve Box



Multi-channel Transfer Line



Multi-channel Transfer Line

Contact

Cryotherm GmbH & Co. KG
Euteneuen 4
57548 Kirchen/Sieg, Germany
☎: +49 27 41 95 85-0
☎: +49 27 41 69 00
✉: info@cryotherm.de
🌐: www.cryotherm.de

